

# lunch seminar

Research Institute  
at Maison franco-japonaise  
UMIFRE 19 CNRS-MAEE

Thu. June 20<sup>th</sup>, 2013

12:30 - 14:00 | room 601 | in English (no translation)



With the generous support of  
the French Chamber of  
Commerce and Industry in Japan.

## Childcare, Work-Life Balance and Parental Well-Being in Japan

**Speaker** Barbara HOLTHUS (German Institute for Japanese Studies [DIJ])

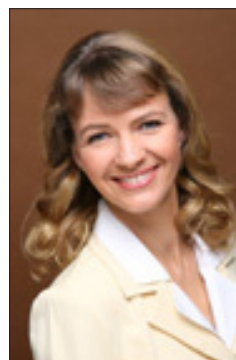
**Moderator** Hélène LE BAIL (UMIFRE 19, MFJ)

Over the last decades, the number of people deciding to become parents in Japan has significantly declined. Numerous family policies have been implemented to counter this trend, so far with meager success.

Japan's family policies can be broadly distinguished into three dimensions: "time," "infrastructure," and "money". The most recent monetary family policy in Japan is the childcare allowance. "Time" has been on the forefront of measures to increase the low fertility rate since the implementation of work-life balance measures. Yet the oldest low fertility countermeasures are those to improve the "infrastructure" for parents, such as the increase in daycare facilities.

Do these policies find approval among parents? What are the most important needs that parents voice? How satisfied are parents with family policies?

This seminar tries to provide answers to these questions by using survey and ethnographic data of parents of young children throughout Japan.



**Barbara G. HOLTHUS** holds a Ph.D. in Japanese Studies from the University of Trier, Germany, and a Ph.D. in Sociology from the University of Hawaii. Since March 2007, she is a senior research fellow at the German Institute for Japanese Studies Tokyo (DIJ). Her research focuses on demographic change and childcare, work-life balance, well-being, marriage and family, social movements, as well as the role of the media in society. She is currently leading the DIJ project "Parental Well-being: Comparing Germany and Japan".

**Hélène LE BAIL** is a research fellow at the French research center on Japan, MFJ. Her research deals with Chinese migration. She holds a doctorate in political science from the Paris Institute of Political Studies and a master degree in Chinese studies. She is the author of: "Skilled and unskilled Chinese migrants in Japan: context and perspectives," *Cahiers d'Ebisu* no 3, 2013, online: [http://www.mfj.gr.jp/publications/nouveautes/les\\_cahiers\\_debisu\\_no\\_3/index.php](http://www.mfj.gr.jp/publications/nouveautes/les_cahiers_debisu_no_3/index.php).

### What is the Lunch Seminar at MFJ?

This typical event has been organized at the Maison franco-japonaise (Nichi-Futsu Kaikan) since 2004. It offers a presentation followed by a discussion dedicated to a specific issue of the time and it aims at bringing a better understanding of Japanese economy and society.

This is a brown bag lunch seminar (please bring your bento or sandwiches). Coffee available.

### How to attend the Lunch Seminar?

The participation to the Lunch Seminar is free but registration is strictly required.

Please apply by e-mail to [contact@mfj.gr.jp](mailto:contact@mfj.gr.jp) or by fax (03-5421-7652) specifying your name, company or institution, position, address, phone and e-mail.

For more information, see: [http://www.mfj.gr.jp/web/lunch\\_seminar/lunch\\_seminar.html](http://www.mfj.gr.jp/web/lunch_seminar/lunch_seminar.html).

### French Research Institute on Japan at Maison franco-japonaise

3-9-25, Ebisu, Shibuya-ku, 150-0013 Tokyo



### Information

from Monday to Friday from 9:30 to 18:00

Tel : 03-5421-7641 Fax : 03-5421-7651

HP : [www.mfj.gr.jp](http://www.mfj.gr.jp)